

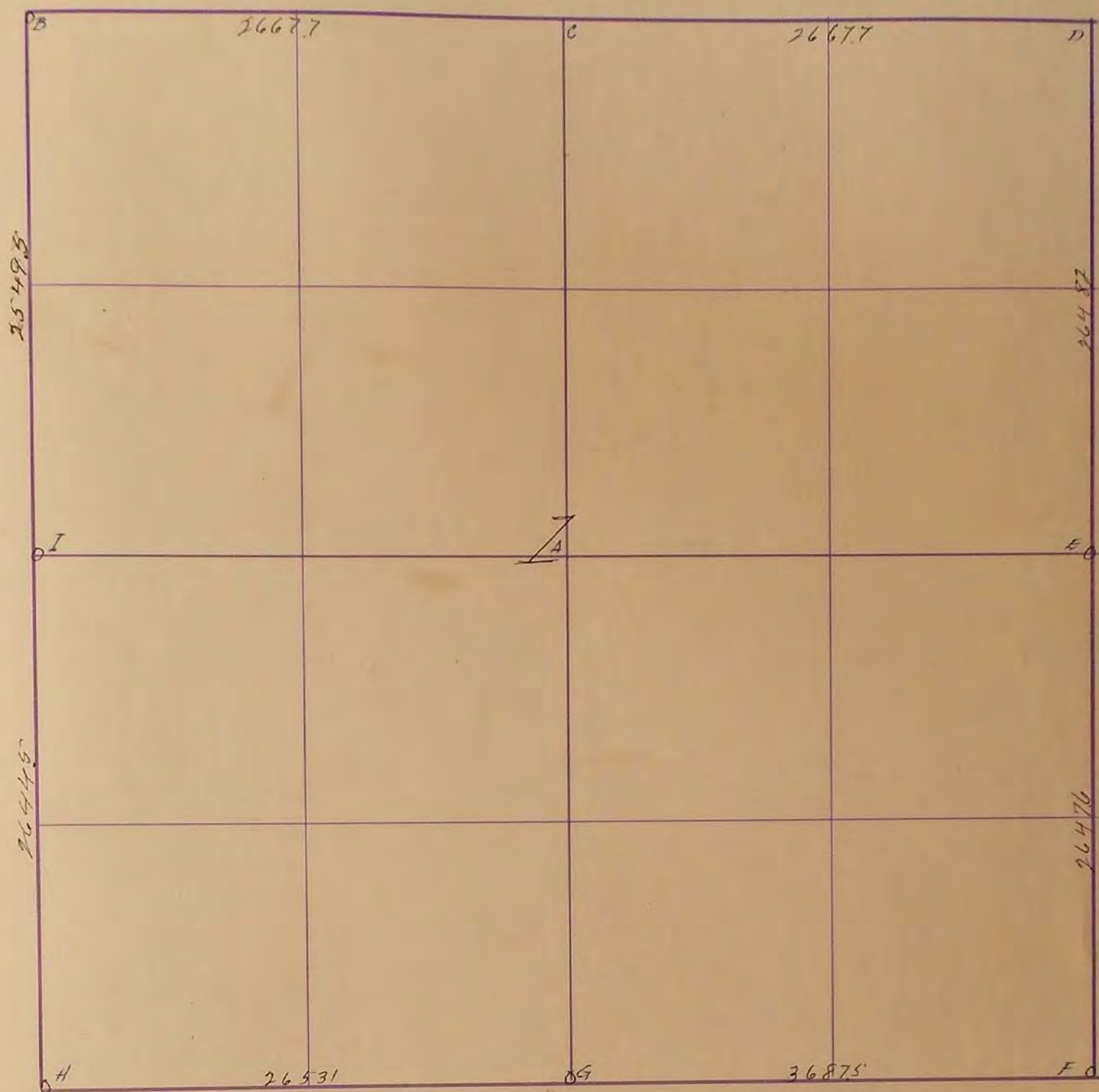
MURRAY COUNTY.

Section 1

Township 108

Range 39

10798 McGill-Warner Co., Blank Book Manufacturers, St. Paul.



Surveyed by D. L. Beigham County Surveyor of Redwood Co. Minn June 1901
 Platted by him July 5-1901

Original plat on file in office Town clerk Holly Township

This record made by J. R. Johnston Co. Surveyor of Murray Co. from original plat
 June 12-1915. o Indicate gov't corners as found by D. L. Beigham

"d" Found Stone; R.P. Tac K in Cor. fence post S.E. 39²; R.P. Hole in Steel fence Cor post N.E. 33³

"H" Placed iron pin 3" below road grade 1967

R.P. N40. P.P. SW 58.65'

R.P. N80. P.P. NE 81.45'

R.P. Top edge case April SE. 43.25'

"G" Placed iron pin 3" below road grade 1967

R.P. Hub in fence South 100'

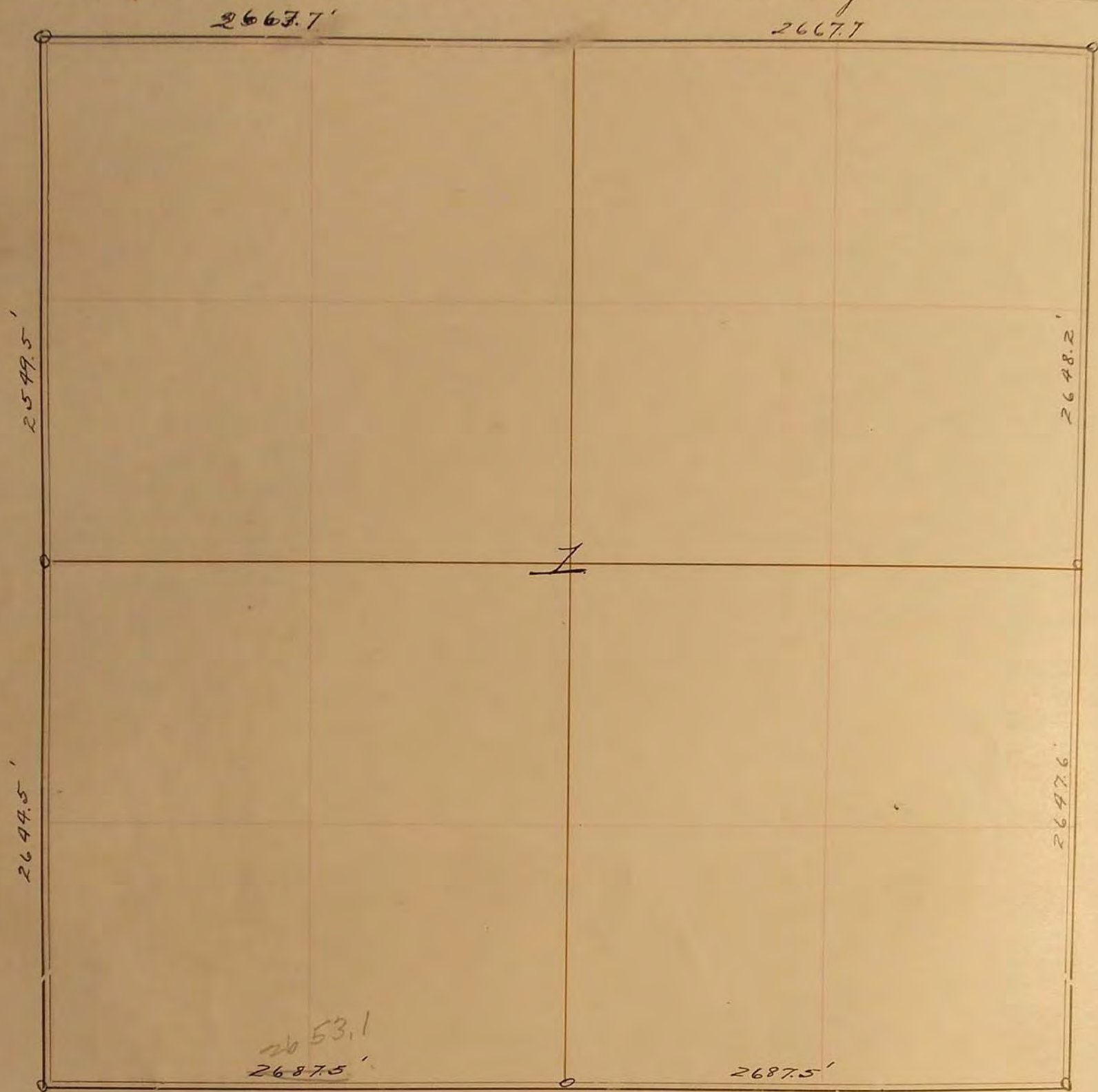
R.P. Hub N.E. 100' & R.P. Hub N.W. 100'

Range 40

"B" Did not locate monument 2667.7' east of "B" - Dig with
 backhoe 4' x 6' x 8' deep Oct. 31, 1974

1
2
3
4
5
6
7
8
9
10
11
12
13
14
15
16
17
18
19
20
21
22
23
24
25
26
27
28
29
30
31
32
33
34
35

SURVEY No. _____

Section 1 Town T108R39 Range _____

FIELD NOTES.

Surveyed by D. L. Bigham, County Surveyor of Redwood County, Minn. June 1906.
Platted by him, July 5-1906.

Original plat on file in office of ^{Town} County Clerk of Holly Township.

This record made by J. R. Johnston Co. Surveyors of Murray Co. from original plat June 12-1915.

o Indicates Gov't corner as found by D. L. Bigham.